

# Touch Screen Monitor

## *User Manual*



Content:

Cautions .....2

1 Package contents .....2

2 Driver install .....2

3 Touch Screen Calibration.....6

## Cautions

- 1.1 The touch screen is made of glass and is easily breakable. Please handle it with care.
- 1.2 Please make sure touch screen (USB or serial port) is connected to the PC.
- 1.3 Please close your Antivirus Software before installing the driver.
- 1.4 After driver installation, please reboot computer.
- 1.5 Do not plug the monitor in and out while the computer is on. For best results clean the front and rear surface of touch screen.
- 1.6 Touch screen system is comprised of: touch screen and PC.

## 1 Package contents


In the carton, you will find the following:






- Infrared touch screen
- USB connecting wire
- CD (User manual, software)

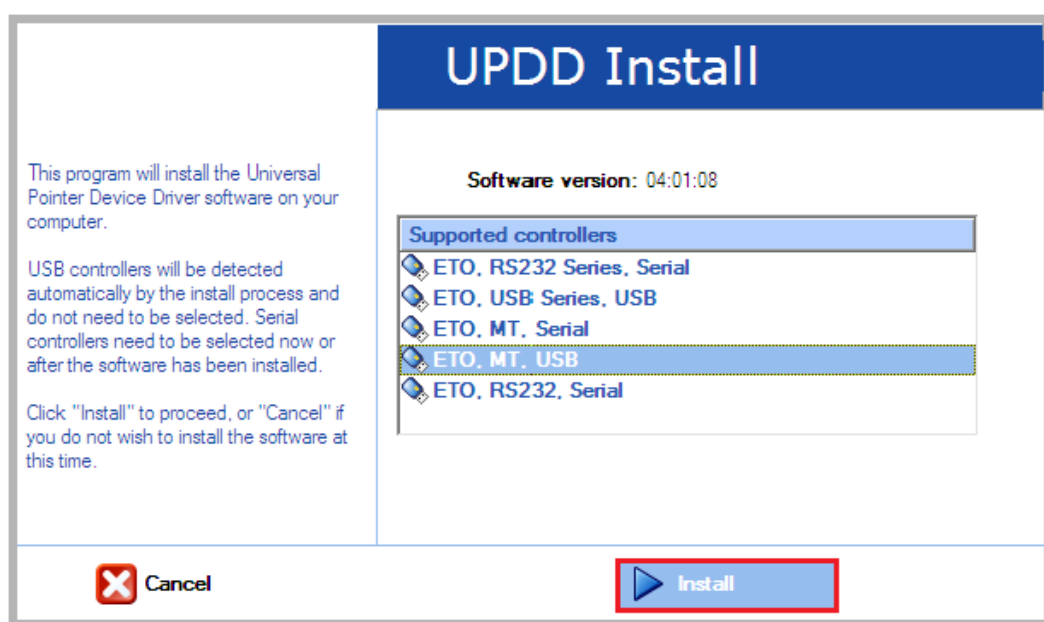
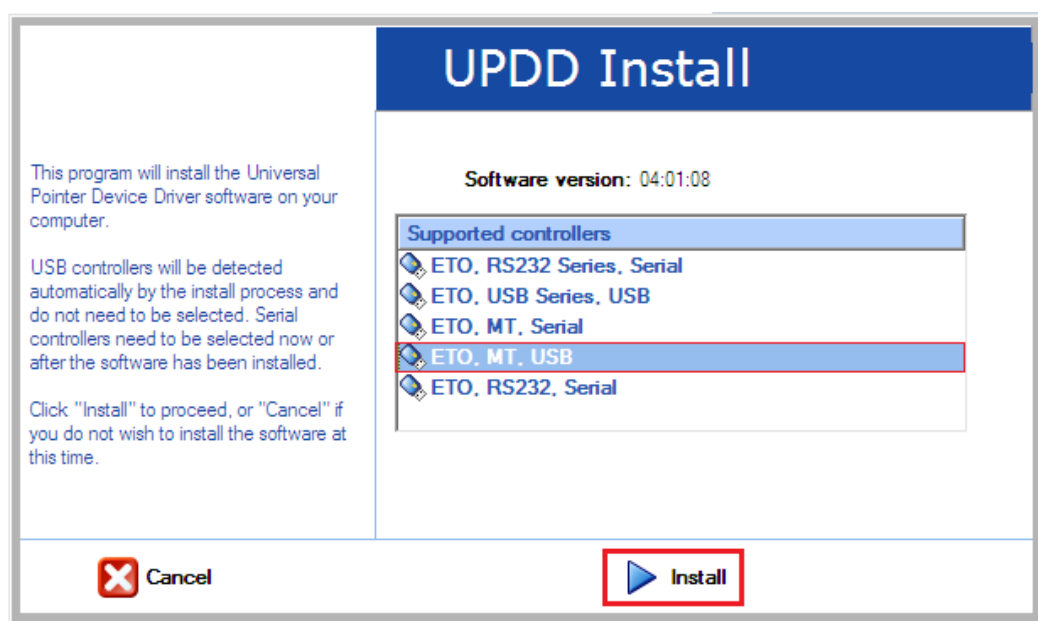
## 2 Driver install

Open the Driver CD disk, and choose the driver according to the user's computer system. Or download the driver from <http://www.avnudigital.com/touch-screen-m32s1-t.php> under the support tab.

Here it is an example for reference:

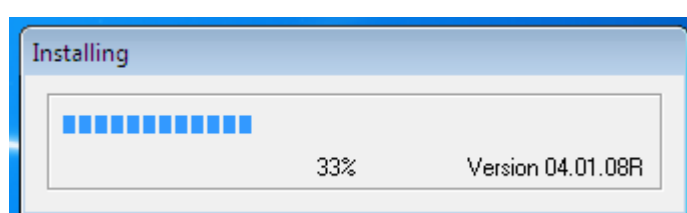
2.1 Double-click  Win7Driversetup32Bit.exe , as below

 ETO, RS232 Series, Serial	For single touch screen, Serial Port
 ETO, USB Series, USB	For single touch screen, USB
 ETO, MT, Serial	For multi touch screen, Serial port
 ETO, MT, USB	For multi touch screen, USB
 ETO, RS232, Serial	For single touch, Serial port

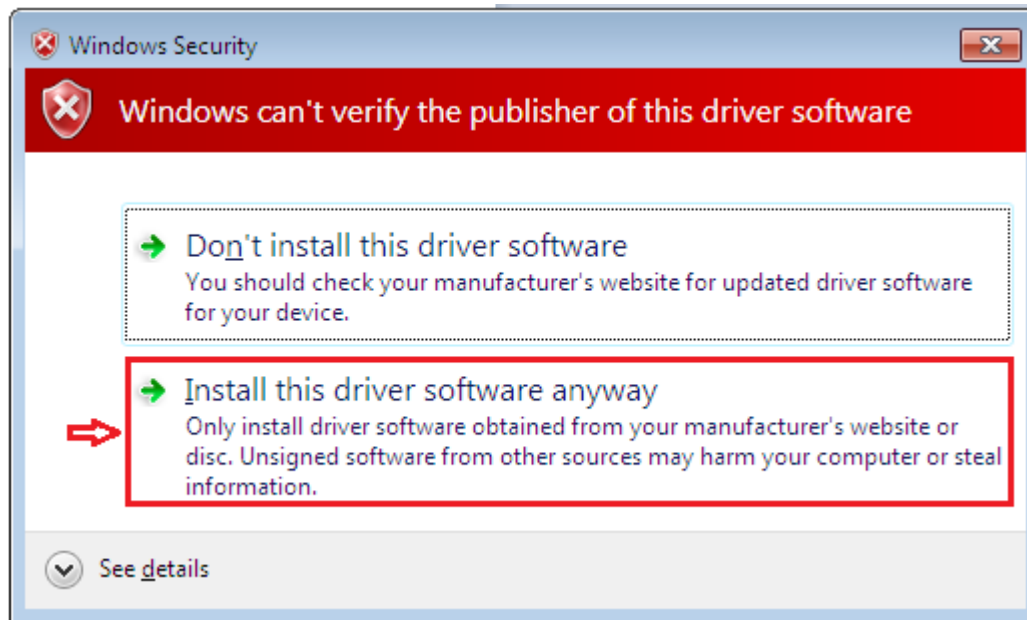


2.2 Choose "ETO, MT, USB", Click "install"

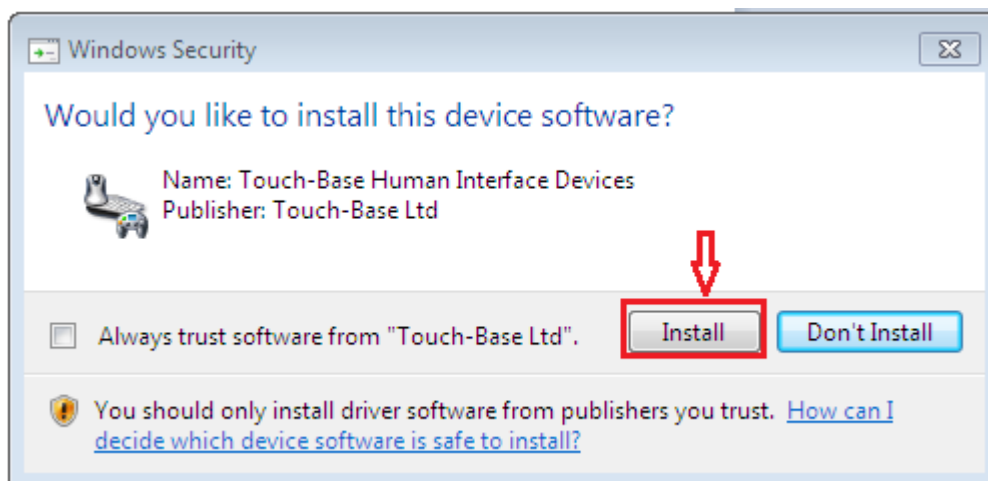
2.3 Click "Install", below Progress Bar will appear

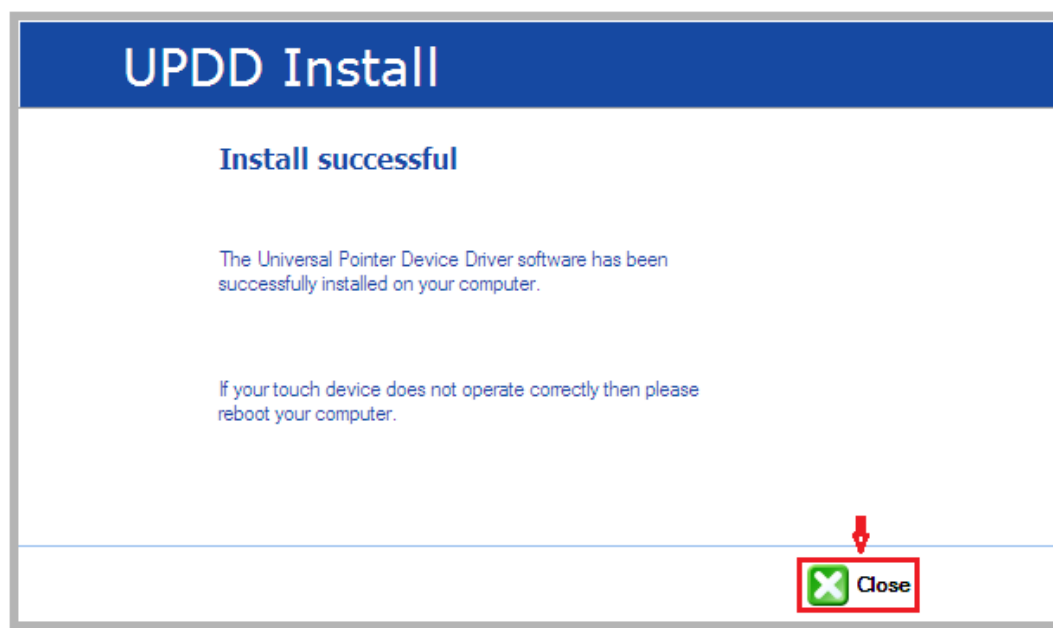


2.4 During installation, you will see below Dialog



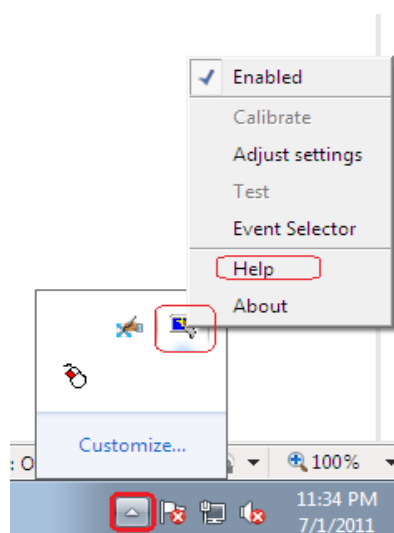
Click Install as below





Click “Close”, the driver is installed successfully

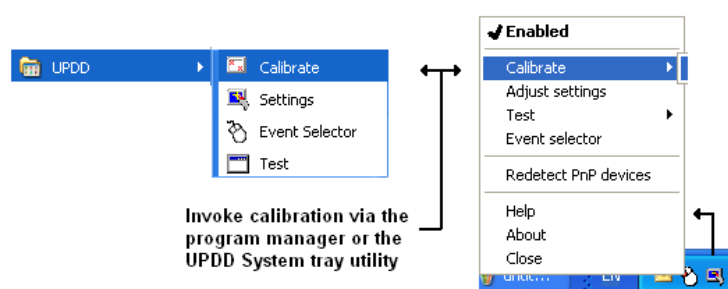
After driver installation, there is icon show on the right corner of computer. For more detailed instruction, please refer to “Help” as below.



### 3 Touch Screen Calibrations

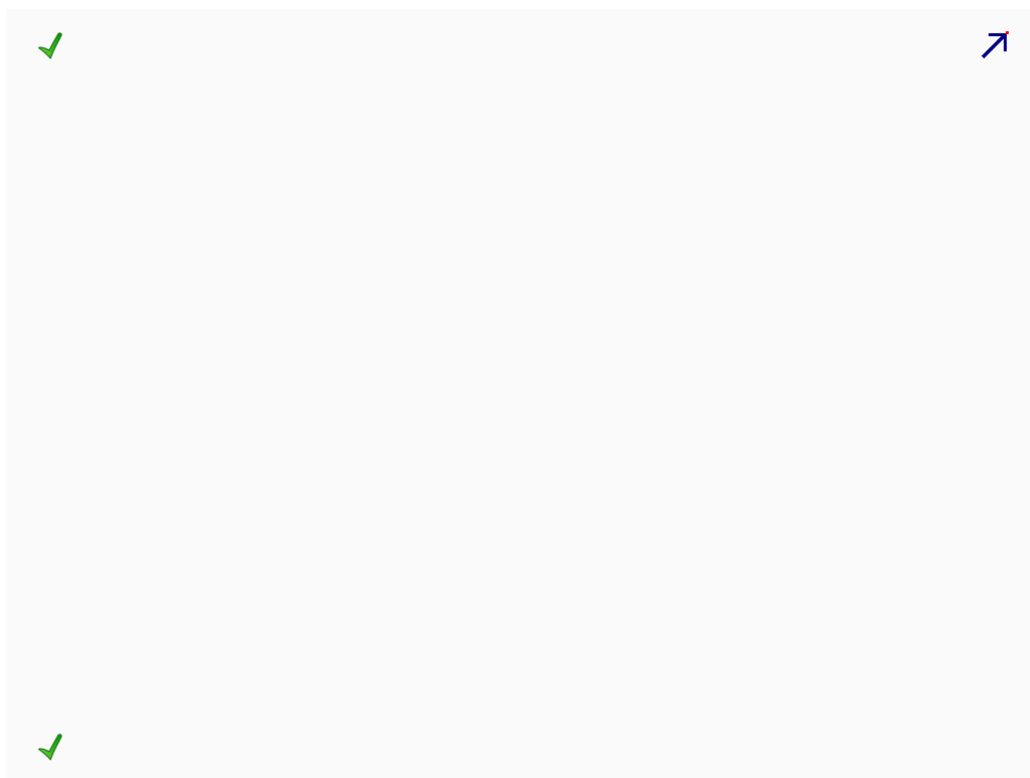
If you find that touch is not accurate, please use this option to calibrate.

Click the Driver Icon, and choose “Calibrate”



Touch the “arrows” as it appears to calibrate the touch screen.





After finishing calibration, please reboot computer.